

*Discover*

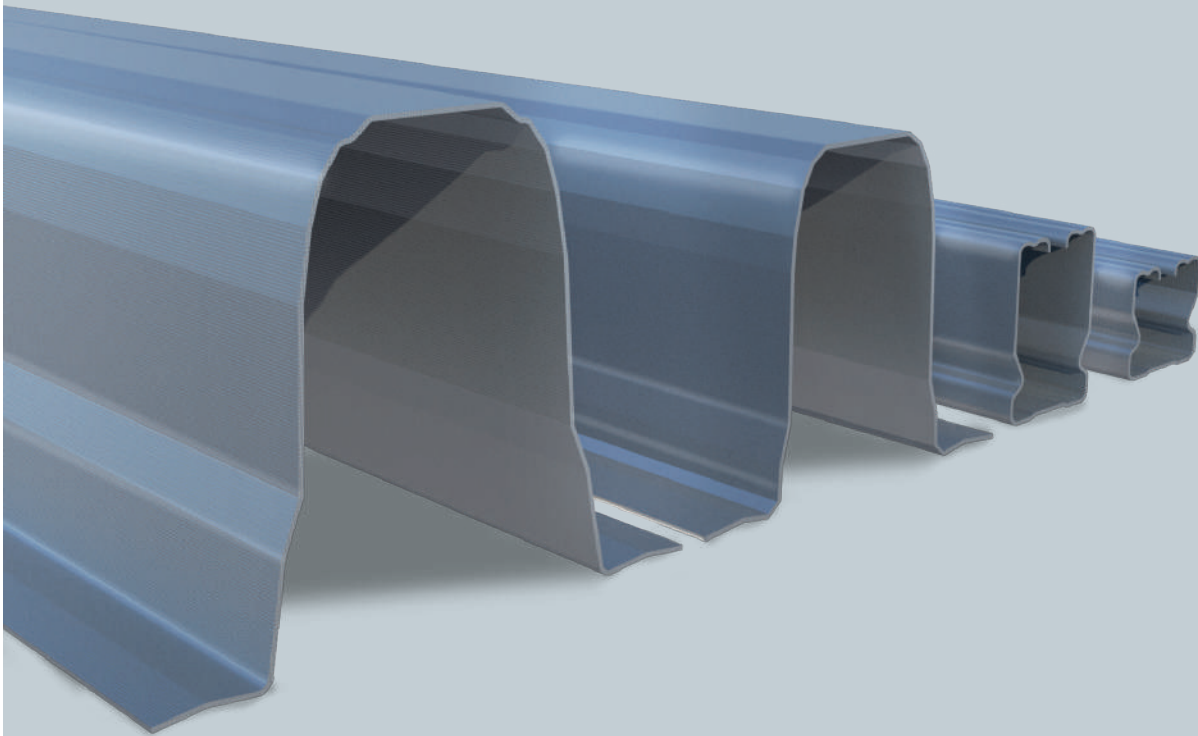
# PHILADELPHIA SOLAR

STEEL MOUNTING STRUCTURE CATALOGUE



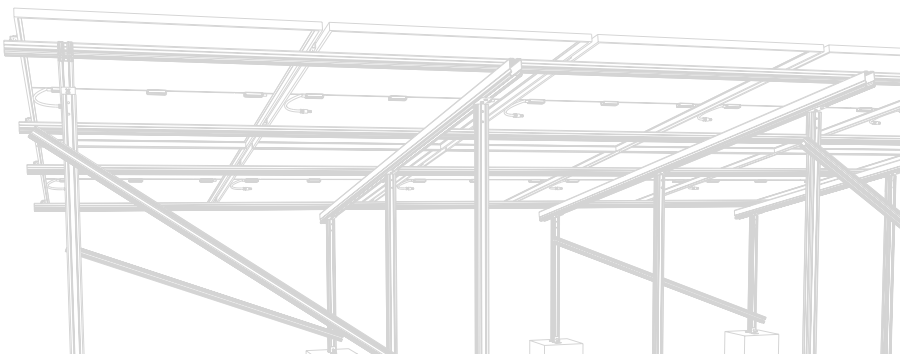
**Philadelphia Solar**  
Delivering Clean Energy Solutions

# Best Partner for Philadelphia Solar Panels



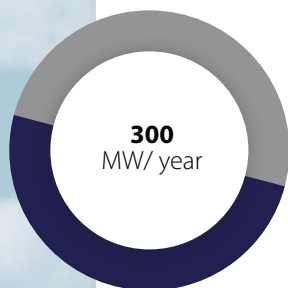
# Table of Content

1. Who we are ? -----	2
2. Why Magnelis®? -----	3
3. Our Steel Sections -----	4
4. Accessories -----	6
4.1 Clamps -----	8
5. Mounting Systems -----	10
5.1 Flat Roof Mounting Structure -----	12
5.2 Ramming Mounting Structure -----	12
5.5 Carpark Mounting Structure -----	13
5.6 Canopy Mounting Structure -----	13
5.3 Tin Roof Mounting Structure -----	14
5.4 Tile Roof Mounting Structure -----	14
6. References -----	15



# Philadelphia Solar

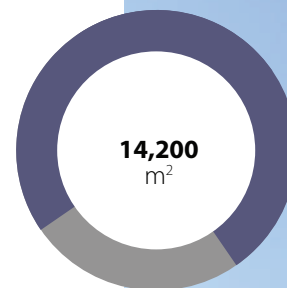
**STEEL PRODUCTION  
CAPACITY**



**MOUNTING STRUCTURE  
EXPORTS**



**BUILDUP AREA OF  
FACTORY**



PS is a leading manufacturer of high-quality solar (PV) panels and steel mounting structures. Our state-of-the-art steel structure manufacturing line was established in 2014 and utilizes the latest automated production equipment. With over 500 highly trained employees, including engineers, technicians, quality assurance officers, and structural designers, we ensure that our PV mounting structures meet the most rigorous quality standards in the industry. Our commitment to excellence is evident in every aspect of our production process, from design to delivery.





# Why Magnelis®?

Magnelis® is an extraordinary metallic coating that provides a breakthrough in corrosion protection. Magnelis® is also the best choice for a wide variety of applications especially PV mounting structure. Thanks to its unique composition, Magnelis® provides an unprecedented level of surface and cut-edge protection, even in the most hostile environments. Magnelis® is produced on a classic hot-dip galvanizing line, but the molten bath has a unique chemical composition including 3.5% Magnesium , 3% Aluminum, 92.5% Zinc .

01

Excellent Corrosion Resistance

Magnelis® resists corrosion longer than standard galvanised products and it outperforms coatings containing less magnesium that reach up to 3 times better.

The self-healing effect of Magnelis® ensures the protection of uncoated edges, scratches and perforations

02

Self-healing Effect

03

Suited For Harsh Environments

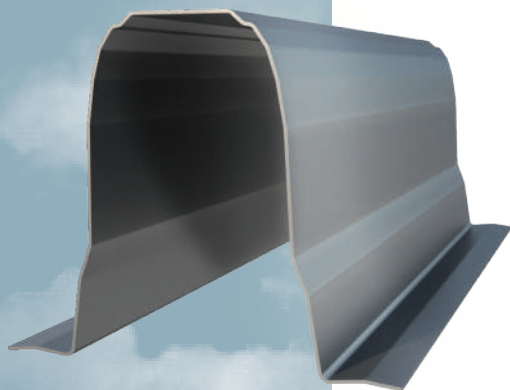
The superior corrosion resistance of Magnelis® has been demonstrated in accelerated laboratory testing and proven through outdoor tests

The application of a Magnelis® coating ensures the preservation of natural resources as it uses significantly less zinc than pure zinc coatings.

04

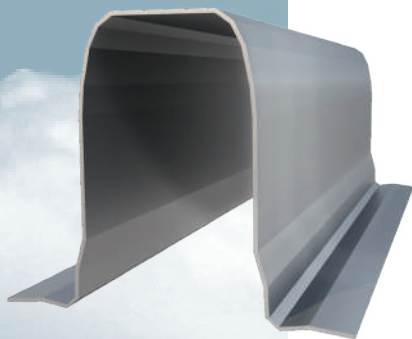
Environmentally Friendly

# Unique Magnelis Sections



## Section **Hat150**

Material	S320 + ZM310
Finish	Magnelis (Mg 3.5% - Al 3% - Zn 92.5%)
Weight	4.890 kg/m
Length	Customizable (based on client request)
Dimensions	Section H: 14.5 cm W: 18 cm

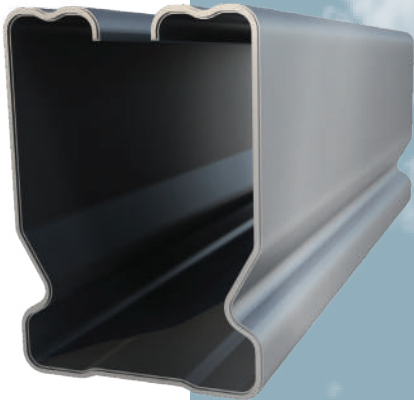


## Section **Hat105**

Material	S320 + ZM310
Finish	Magnelis (Mg 3.5% - Al 3% - Zn 92.5%)
Weight	3.643 kg/m
Length	Customizable (based on client request)
Dimensions	Section H: 10.5 cm W: 13 cm

# Section C70

Material	S320 + ZM310
Finish	Magnelis (Mg 3.5% - Al 3% - Zn 92.5%)
Weight	2.737 kg/m
Length	Customizable (based on client request)
Dimensions	Section H: 7 cm W: 5 cm

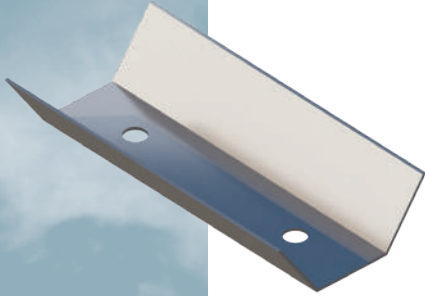


# Section C45

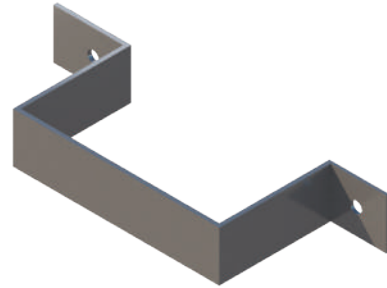
Material	S320 + ZM310
Finish	Magnelis (Mg 3.5% - Al 3% - Zn 92.5%)
Weight	2.148 kg/m
Length	Customizable (based on client request)
Dimensions	Section H: 4.5 cm W: 5 cm



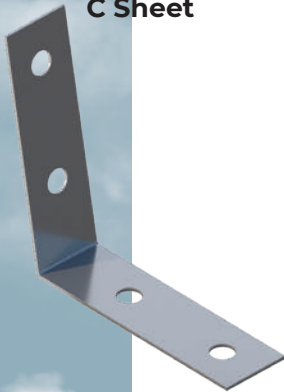
# Accessories and Fittings



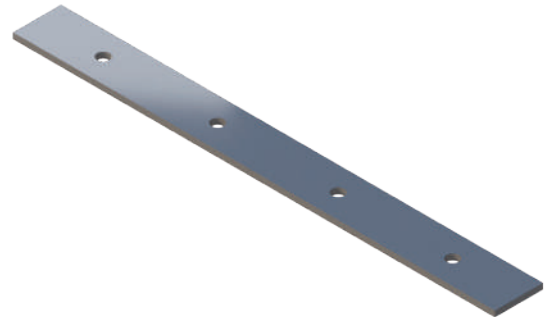
Magnelis  
**C Sheet**



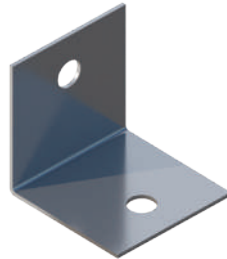
Hot Dip Galvanized  
**Bracing Clamp**



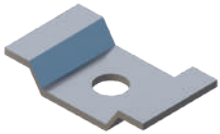
Stainless Steel  
**Angle Connector**



Hot Dip Galvanized  
**Purlin Connector**



Hot Dip Galvanized  
**Angle**



**S.S M8** Wingnut



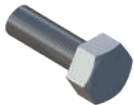
**S.S Plain** Washer



**S.S** Spring Washer



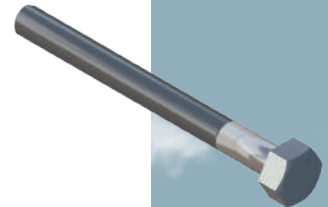
**S.S M10** Nut



**S.S M10x30** Hex Head



**S.S M10x80** Hex Head



**S.S M10x110** Hex Head



**S.S M8x30** Purlin Connector



**S.S M8x50** Allen key

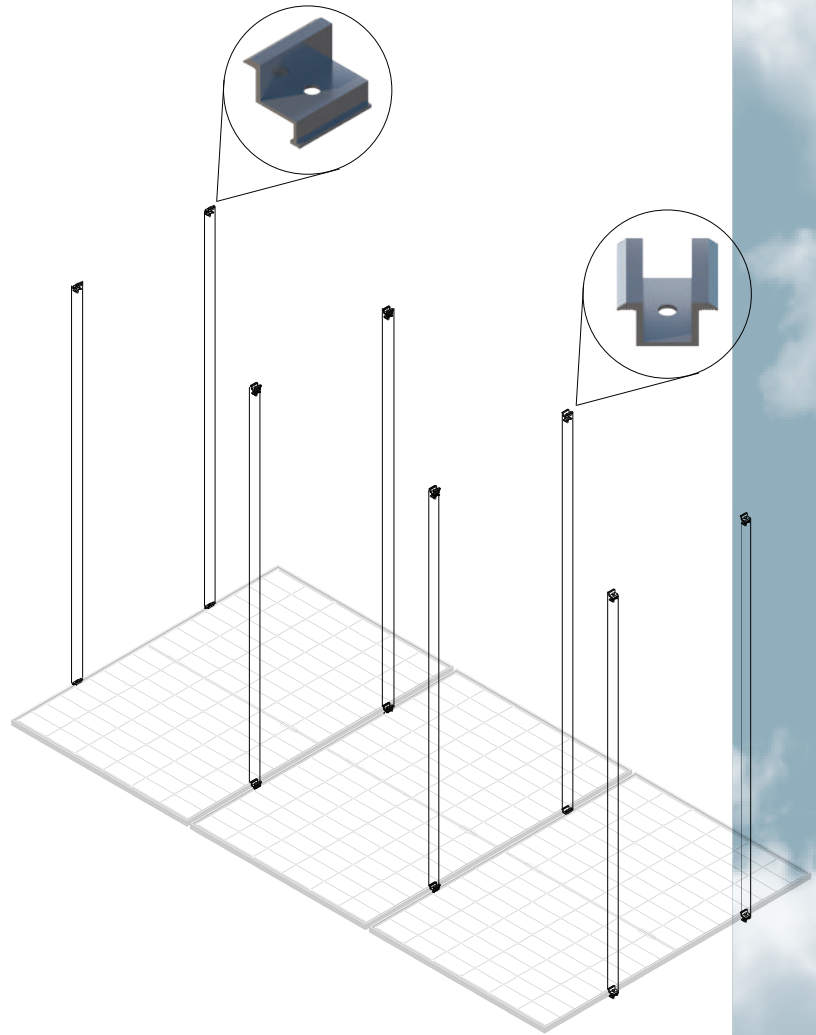


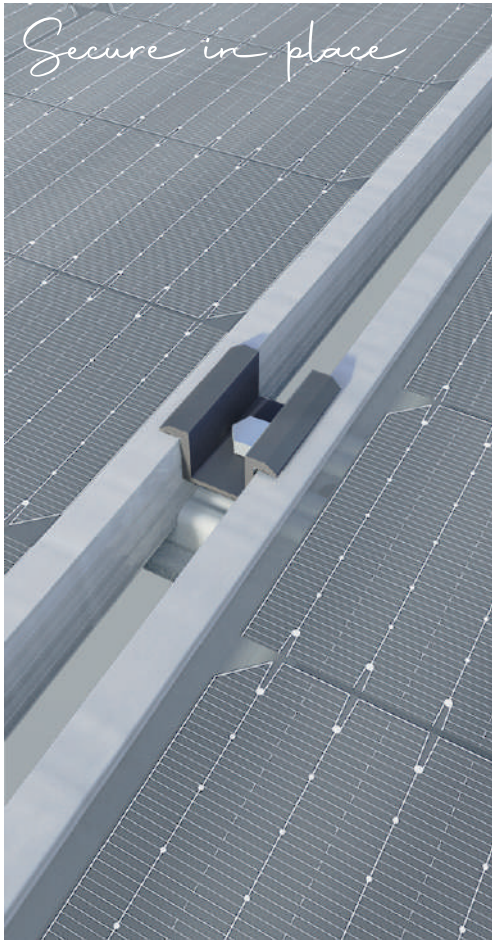
**S.S M10x110** Mechincal Anchor



# Our Unique Clamps

Made of aluminum, our middle clamps / edge clamps – with a Bolt and wingnut – are made to ensure safe and reliable mounting of solar panels on any given surface and suitable with most PV panels, depending on the number of your panels, you will need a different amount of these clamps.





# Applications

## Features



Corrosion resistance performance up to 3 times better than Hot Dip Galvanized sheet



Self repairing protection for the cut edges



The best suited protection to withstand harsh environments



Customized designs to fit your solar applications



Compatible with all types of modules



20-year Warranty against Corrosion/10-year warranty for fitting and accessories

## Technical Data

- Applicable Temperature: - 50 C to 100 C.
- Structure Materials: Magnelis, hot roll sections or based on clients request.
- Basic Wind Speed: 120 km/hr - 160 km/hr or based on clients request.
- Design Snow Pressure: According to site elevation above sea level.
- Design Standards: Jordanian loads and weights code, ASCE, AISC and AISI & BS.

**Roof top system**



**Car park system**



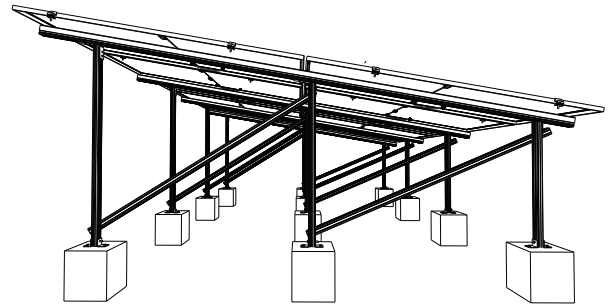
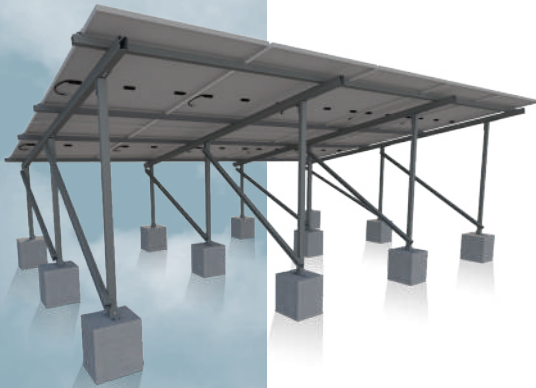
**Tin roof system**



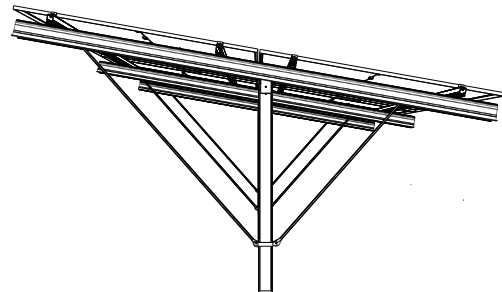
**Ground Mounting system**



# Flat Rooftop System

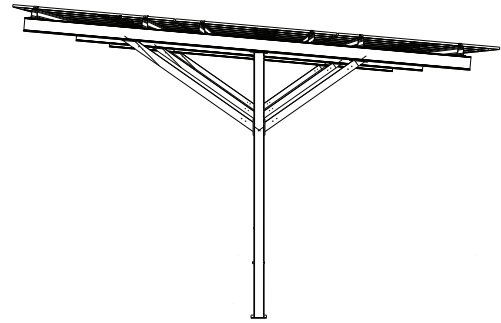


# Ramming System

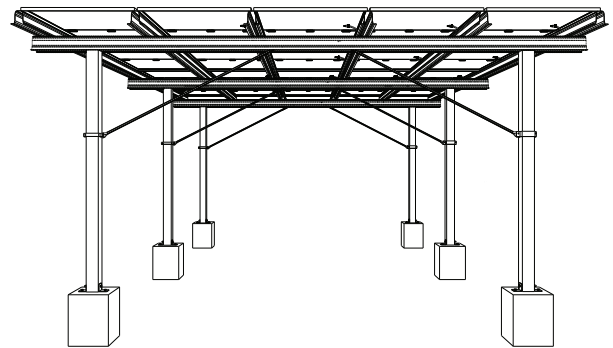




# Carpark System

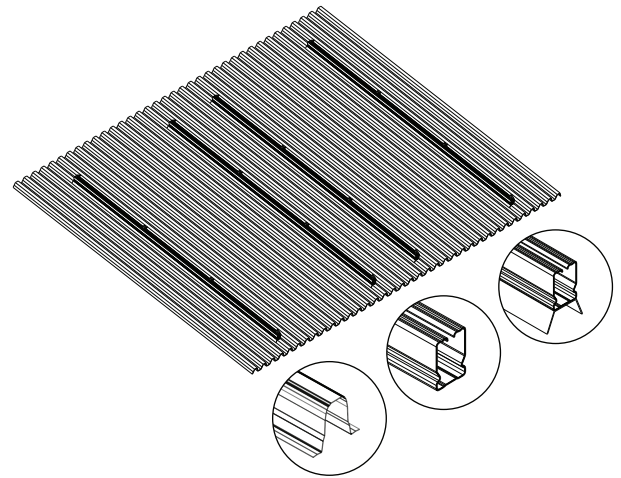
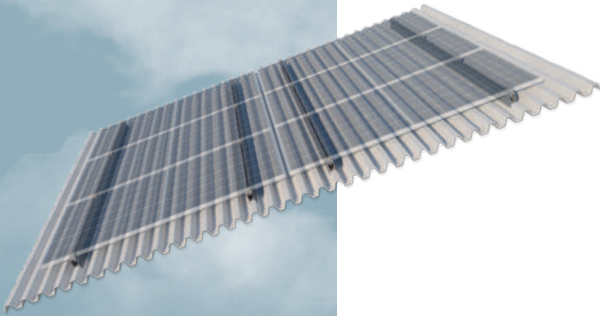


# Canopy System



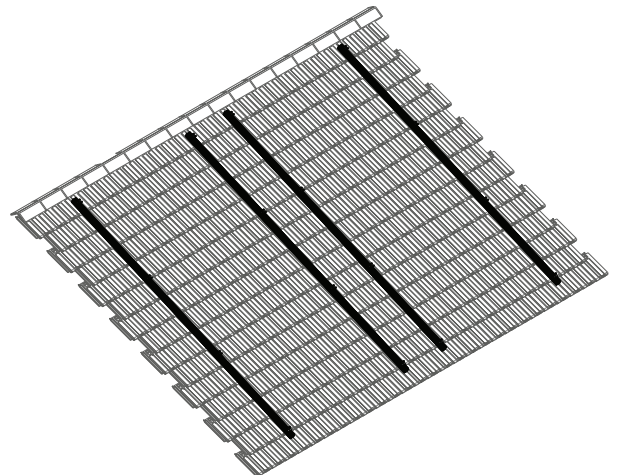
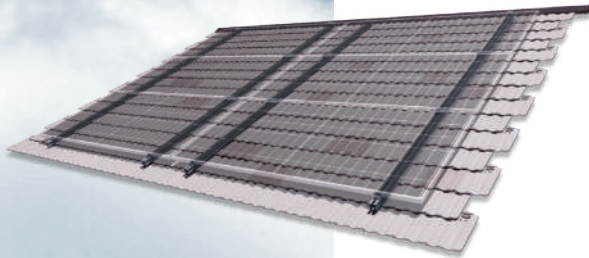
# Tin Roof System

---



# Tile Roof System

---



# Some of our References



Al-Badyia Project **23MW**



Teeba Project **14.75MW**



Social Security **18.75MW**



UCIC **4.5MW**

# Follow us



Facebook



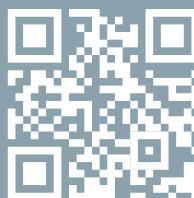
Linkedin



Twitter



Whatsapp

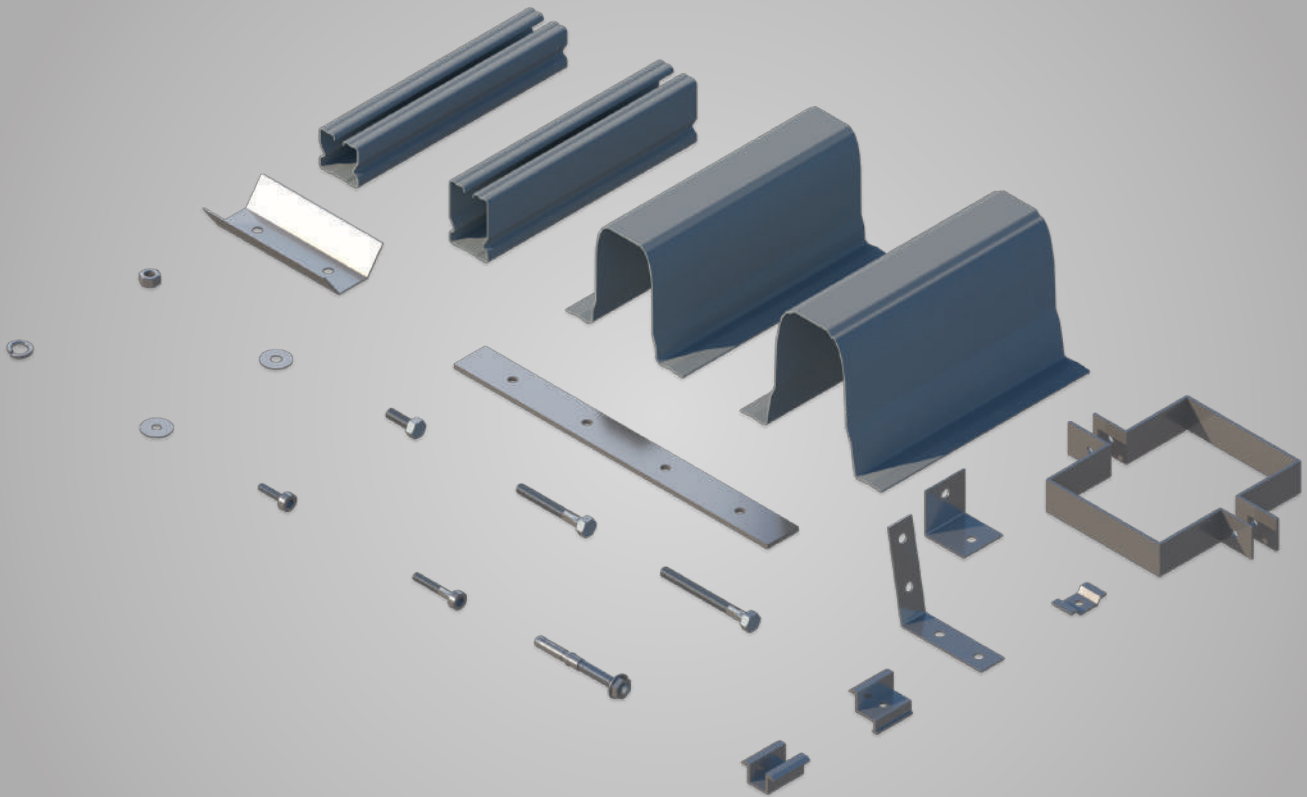


Instagram



Website

# Arrival for the Finest





# PHILADELPHIA SOLAR

*the sunny side of life*

**[www.philadelphia-solar.com](http://www.philadelphia-solar.com)**

**[info@philadelphia-solar.com](mailto:info@philadelphia-solar.com)**

**T. +962 6 471 6601**

**F. +962 6 471 6602**

Philadelphia Solar LLC, Al Qastal Industrial Area 2,  
Airfreight Road 11814 Amman Jordan, P.O. box 143808

**f** PhiladelphiaSolarJO **in** Philadelphia-Solar **🐦** PhiladelphiaSolar