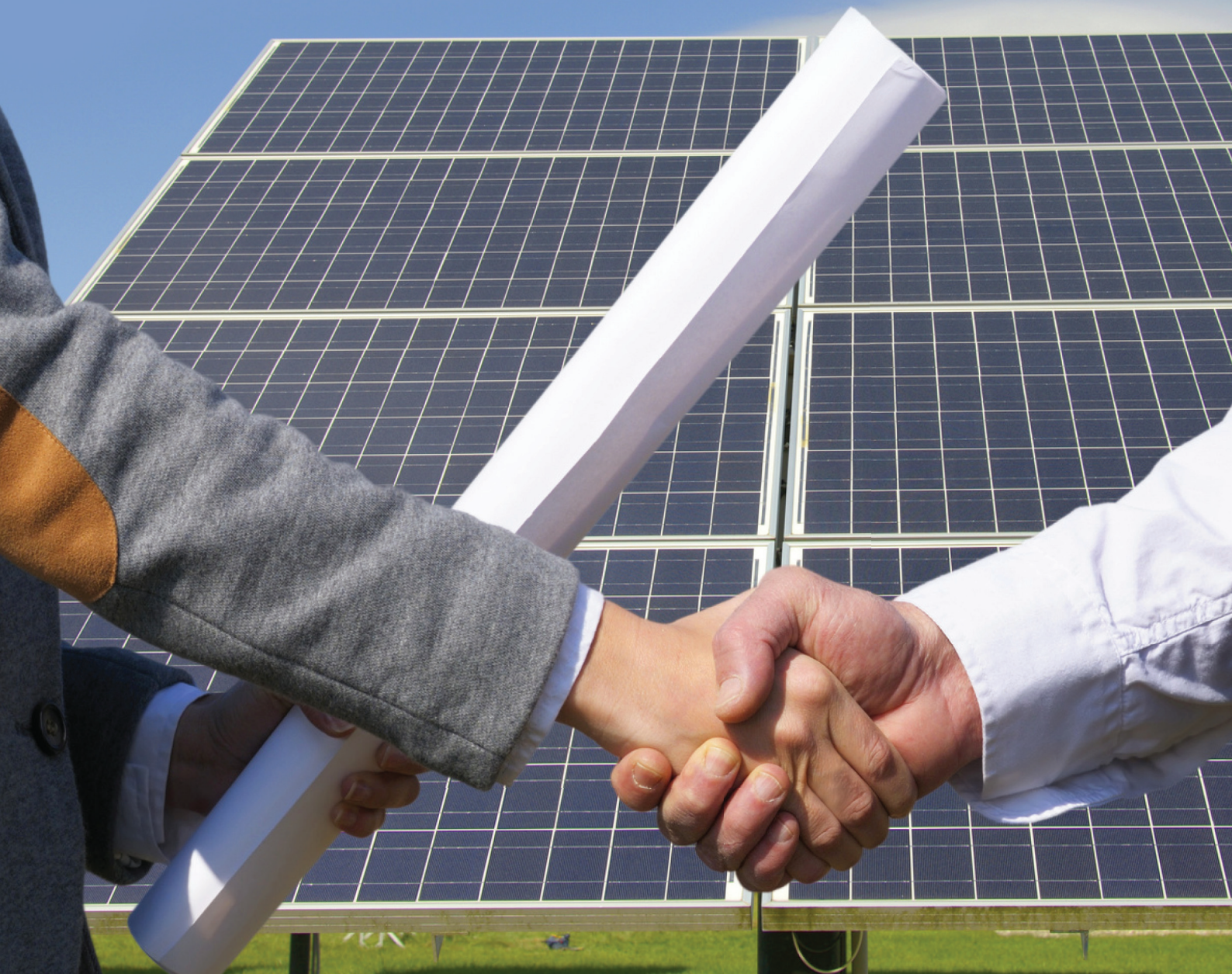


Philadelphia Solar
Delivering Clean Energy Solutions



After Sales Services
General Safety Instructions

After Sales Services

General safety instructions for solar panels use:

1. Do not disassemble or remove any module part.
2. Each module has two labels, one to the backside, and one laminated inside the glass from the front side, both have same serial number, PS - Production Order Number - Sequential number, The backside label includes model and electrical specifications.
3. Do not stand, step, walk and/or jump on modules.
4. Do not drop or place objects (such as tools) on the modules.
5. The installation of PV modules requires a great degree of skill and should only be performed by a qualified professional, please be aware that there is a serious risk of various types of injury occurring during the installation including the risk of electric shock.
6. In order to avoid a risk of injury or electrical shock, do not allow anyone to approach the PV module if the person has little knowledge on PV module or on the measures that should be taken when PV modules are damaged.
7. Do not shade portions of the PV modules surface from the sunlight.
8. Turn off inverters and circuit breakers immediately if any problem occurred.
9. In case the glass surface of a PV module is broken, wear goggles, gloves and tape the glass to keep the broken pieces in place.





10. A defective PV module may generate power even if it is removed from the system, it may be dangerous to handle the PV while exposed to sunlight, place a defective PV module in a carton so PV cells are completely shaded.
11. Philadelphia Solar recommends periodic cleaning of PV modules to ensure maximum power output, especially in regions with low precipitation.
12. Do not clean module during high temperature, temperature lower than zero degrees Celsius, or any time when there is a large temperature difference between module and cleanser.
13. Philadelphia Solar recommends cleaning during early morning or at night when solar radiation is low and the modules are cooler, especially in regions with hotter temperatures.
14. Clean the glass surface of the PV modules with a soft brush using soft, clean water with a recommended pressure less than 5.4 kPa.
15. Do not use steam or corrosive chemicals to facilitate the cleaning of modules.
16. Always consult the company for any technical or further clarification.
17. Failure to comply with the above instructions will void Philadelphia Solar warranty.

Amman, Jordan P.O.Box 143808 Postal Code 11814 Tel. (+962) 6 471 6601 Fax. (+962) 6 471 6602



PhiladelphiaSolarJO



Philadelphia-Solar



Philadelphia Solar



PhiladelphiaSolarJO



Philadelphiaslr